



OSONICTM

Fabric Panel

"Solving sound with Design"

732.659.9262
orders@osonic.com
osonic.com

Specifications

Product name	PET Felt
Shape	Rectangles, square, circles, hexagons, triangles. Custom shapes available
Content	Made from 60% recycled PET felt
Thickness	9mm, 12mm, 18mm, 24mm
Unit Width	upto 48"
Unit Height	upto 96"
Edge Options	Square or Beveled
Sound Performance	ASTM C423-17: NRC 1" = 0.83 and 2" = 1.03
Fire Performance	ASTM 84 Class A
Environmental	Low VOC emissions, woven fabrics are FR (Flame Retardant) free and compliant with CAL AB 2998.
Maintenance	Vacuum to remove any loose dirt or dust. You may use a soft or plastic bristle brush to loosen it. Avoid excess pressure. Compressed air can also be used to dust the material in difficult or large installations. Remove ordinary dirt and smudges with a mild soap and water solution and a clean, soft cloth or towel. Dry with a soft lint-free cloth or towel. A melamine magic eraser can be used for more difficult stains. Always apply any cleaning methods to a small area first to test effectiveness and result.
Warranty	5 years
Unit of Sale	Per square foot



"Solving sound with Design"

732.659.9262
orders@osonic.com
osonic.com

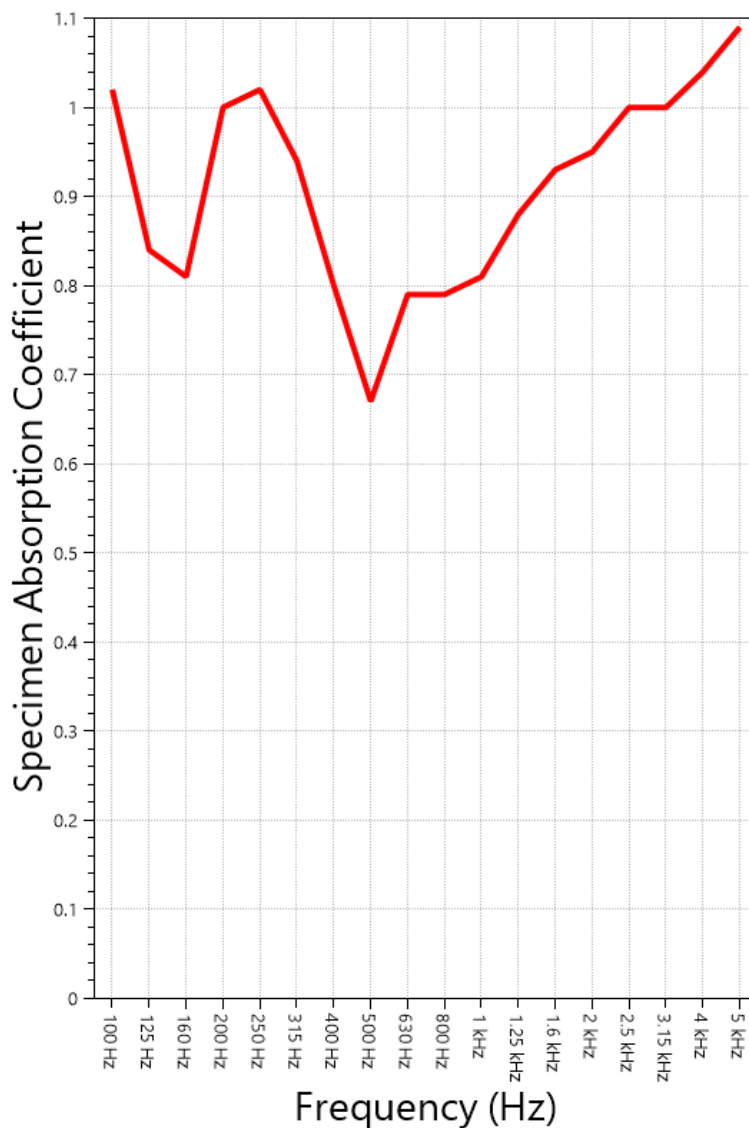
Colors

We currently offer over 35 standard colors thanks to our partnership with Burch. See our Standard Fabrics document on the next page for a complete listing.

We also carry a wide array of other acoustic fabrics and colors by Guilford of Maine, Knoll, Maharam, and more.

Test Results

Sound Absorption Test



SAA = 0.88

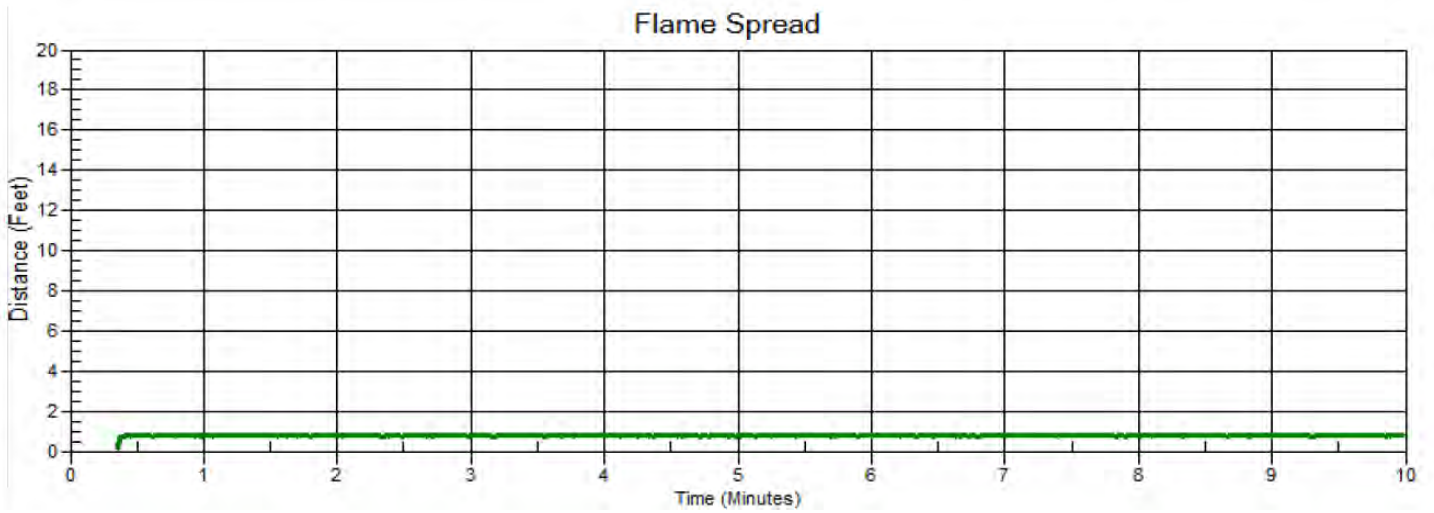
NRC = 0.85



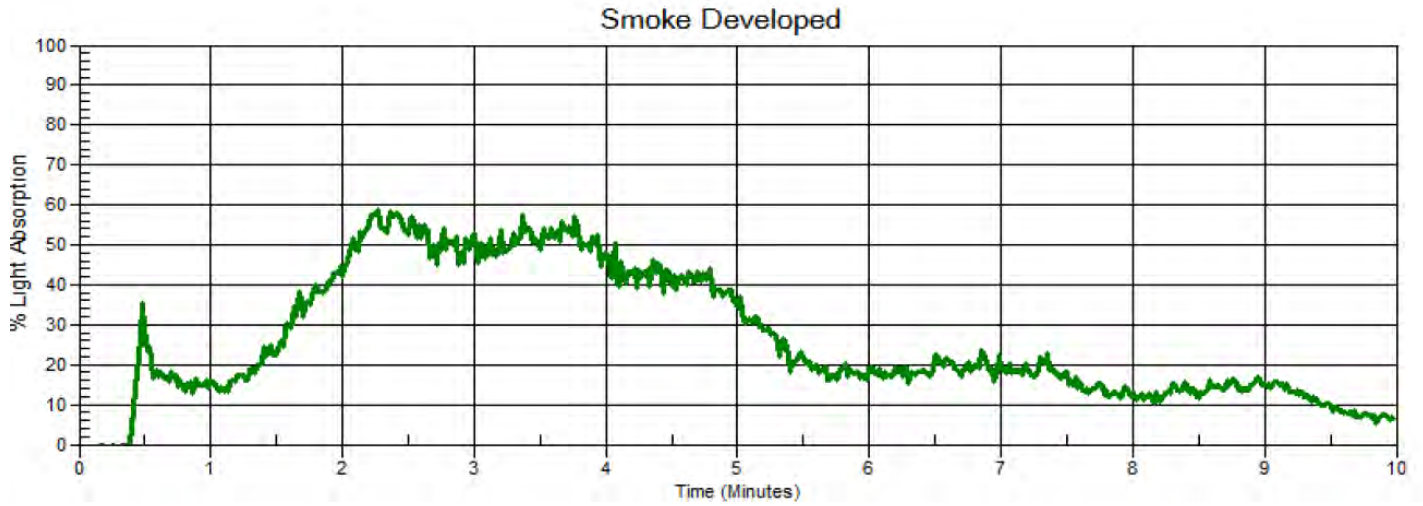
"Solving sound with Design"

732.659.9262
orders@osonic.com
osonic.com

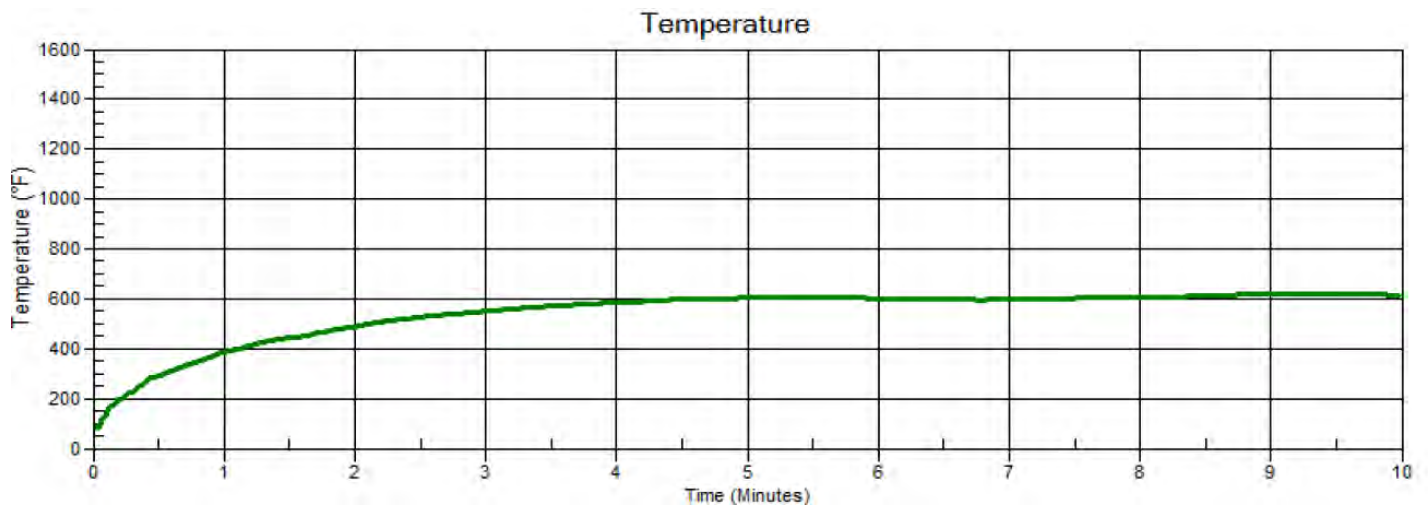
Flame Spread Versus Time



Light Obscuration Versus Time

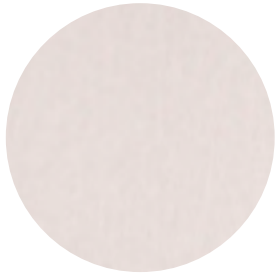


Tunnel Air Temperature Versus Time



"Solving sound with Design"

732.659.9262
orders@osonic.com
osonic.com



SAND DOLLAR



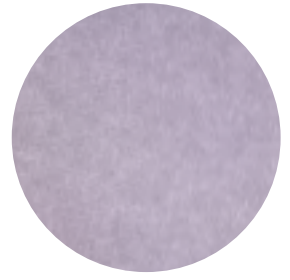
OAT



MARBLE



WHITE



PERIWINKLE



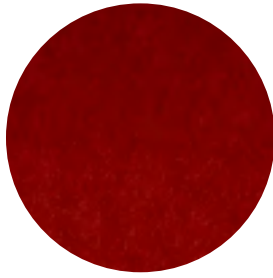
SALMON



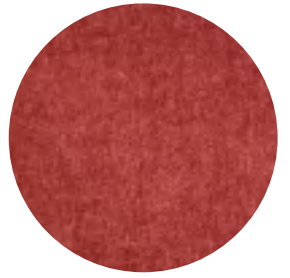
LEMON



YELLOW



RED



BERRY



PINK



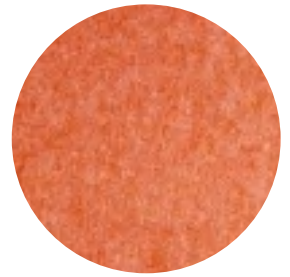
LILAC



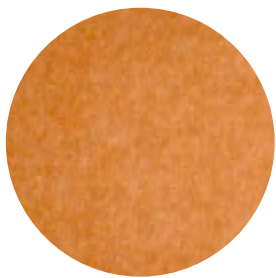
VIOLET



PURPLE



ORANGE



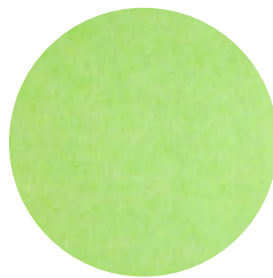
PUMPKIN



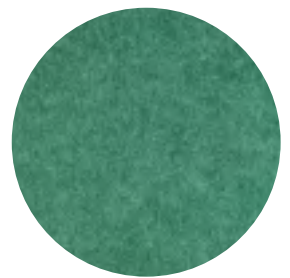
MAROON



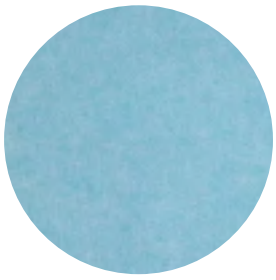
PEAR



LIME



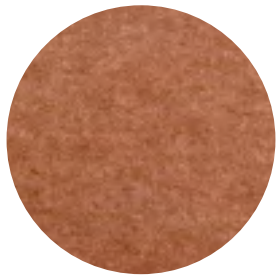
GREEN



TEAL



HICKORY



BROWN



EARTH BROWN



BLUE JEAN



STONE



GREY



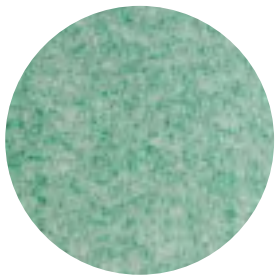
CHARCOAL



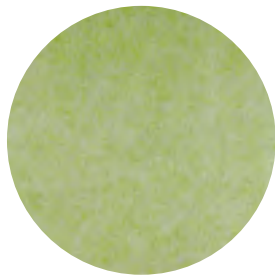
PEPPER



BLACK



HEATHER GREEN



HONEY DEW



SKY BLUE



NAVY



MIDNIGHT BLUE



osonicTM

"Enhance spaces with the warmth, durability, and acoustic comfort of felt—where sustainability meets design innovation."

ISO CERTIFIED
CNC CUTTING AVAILABLE
ECO FRIENDLY

CALL OR EMAIL
FOR A QUOTE TODAY
732.659.9262
orders@osonic.com
osonic.com