



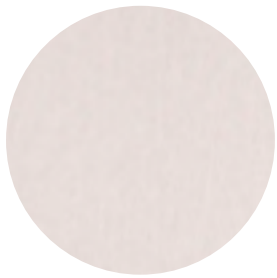
**OSONIC**<sup>TM</sup>

**DESIGNER BOARD  
FELT SAMPLES**

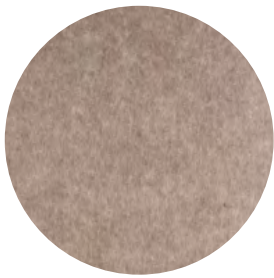
“Solving sound with Design”

732.659.9262  
orders@osonic.com  
osonic.com

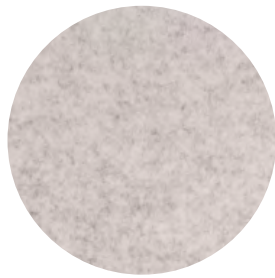
# DESIGNER BOARD FELT



SAND DOLLAR



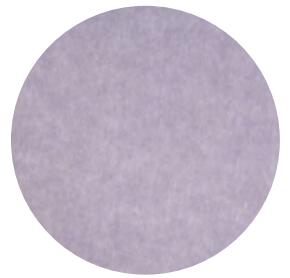
OAT



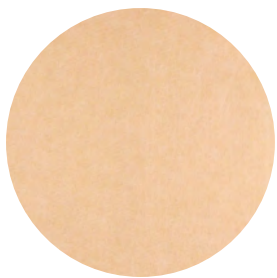
MARBLE



WHITE



PERIWINKLE



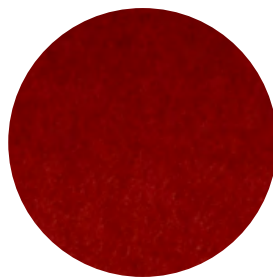
SALMON



LEMON



YELLOW



RED



BERRY



PINK



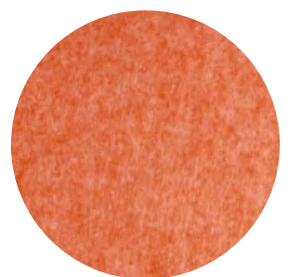
LILAC



VIOLET



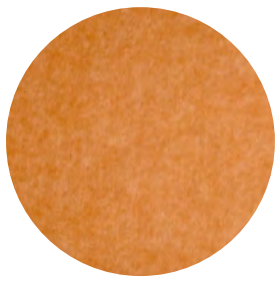
PURPLE



ORANGE

- 35 Vibrant Colors
- Additional Sizes Available
- Custom Shapes, Patterns
- Holes/gormmets Available

- Rigid Panels- 48" X 96" X 9.5mm Thick
- 1500 gsm (44 opsy)
- Machine/Gerber Cuts Beautifully
- 60% Recycled PET fiber



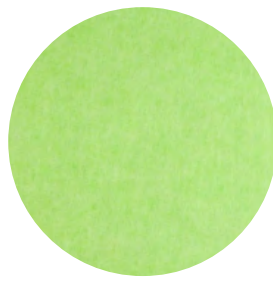
PUMPKIN



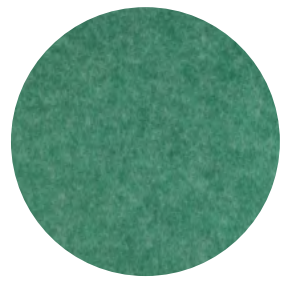
MAROON



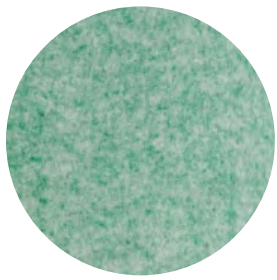
PEAR



LIME



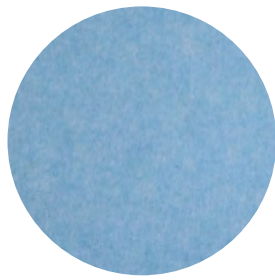
GREEN



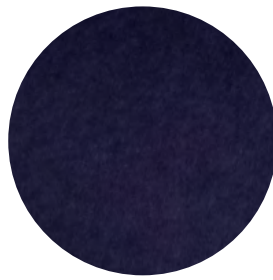
HEATHER GREEN



HONEY DEW



SKY BLUE



NAVY



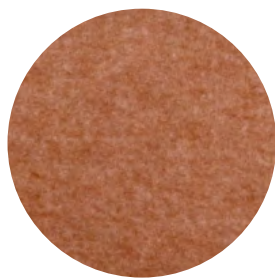
MIDNIGHT BLUE



TEAL



HICKORY



BROWN



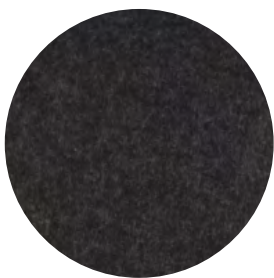
EARTH BROWN



BLUE JEAN



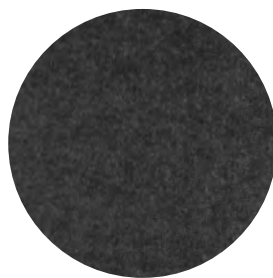
STONE



GREY



CHARCOAL



PEPPER



BLACK



**osonic**<sup>TM</sup>

"Enhance spaces with the warmth, durability, and acoustic comfort of felt—where sustainability meets design innovation."

ISO CERTIFIED  
CNC CUTTING AVAILABLE  
ECO FRIENDLY

CALL OR EMAIL  
FOR A QUOTE TODAY  
732.659.9262  
orders@osonic.com  
osonic.com